



Equipped with AEM® Dryflow™ Filter
No Oil Required!

INSTALLATION INSTRUCTIONS

PART NUMBER: 21-549

2004-2006 NISSAN Maxima V6-3.5L

C.A.R.B. E.O. # D-670

* **NOTE:** Legal in California only for racing vehicles which may never be used upon a highway

PARTS LIST

Description	Qty.	Part Number
Air Filter Assy. 3.25 X 5" Dry Ele.	1	21-2110DK
Inlet Pipe	1	2-594
Hose, Silicone 3.25x3.0"	1	5-325
Hose; 5/8"ID X 18"L	1	5-7018
Mount, Rubber 5/8" X 6mm	1	1228598
Zip Tie, 6 Long	2	1-113
Zip Tie, 8" Tree Push-MNT	1	1-127
Rubber Edge Trim 6"	1	8-3006
Wrench; Torx T20 T/R, L-Key	1	69801
Washer, 6mm Soft Mount	1	08160
Nut, M6 Hex Serrated	1	444.460.04
Hose Clamp, 1 1/16" Narrow	2	4093-6
1/2" Bnd. Hose Clamp, 2.90"-3.75"	2	9452
1/2" Bnd. Hose Clamp, 3.15"-4.00"	1	9456

Read and understand these instructions **BEFORE** attempting to install this product. Failure to follow installation instructions and not using the provided hardware may damage the intake tube, throttle body and engine.

The AEM[®] intake system is a performance product that can be used safely during mild weather conditions. During harsh and inclement weather conditions, you must return your vehicle to stock OEM air box and intake tract configuration. Failure to follow these instructions will void your warranty.

1. Preparing Vehicle

- a. Make sure vehicle is parked on level surface.
- b. Set parking brake.
- c. If engine has run in the past two hours, let it cool down.
- d. Disconnect all negative battery terminals.
- e. Raise the front of the vehicle with a jack. Refer to your owner's manual for proper jack and jack stand placement to properly support vehicle. Support your vehicle using properly rated jack stands before wheel removal or while working under the vehicle.
NEVER WORK UNDER A VEHICLE WITHOUT USING JACK STANDS.
 - i. Remove the driver side wheel.
 - ii. Remove driver's side fender liner.
- f. Do not discard stock components after removal of the factory system.

2. Removal of stock system



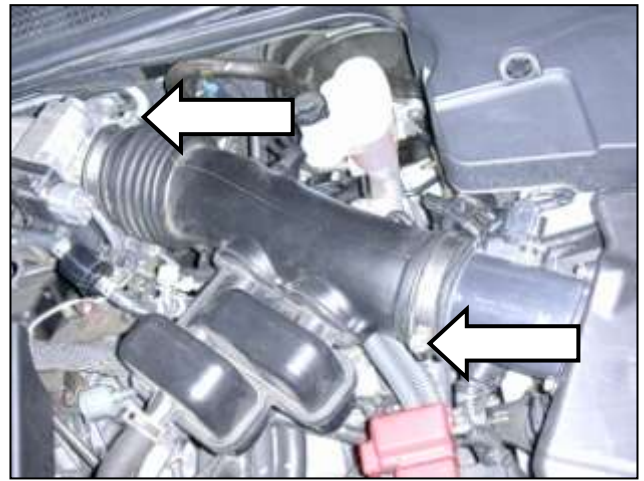
a. Stock air box system installed.



b. Free the differential breather hose from the inlet tube, if equipped. Use a supplied zip tie to secure the hose to the brake booster tube.



c. Pull the crankcase breather hose from the valve cover.



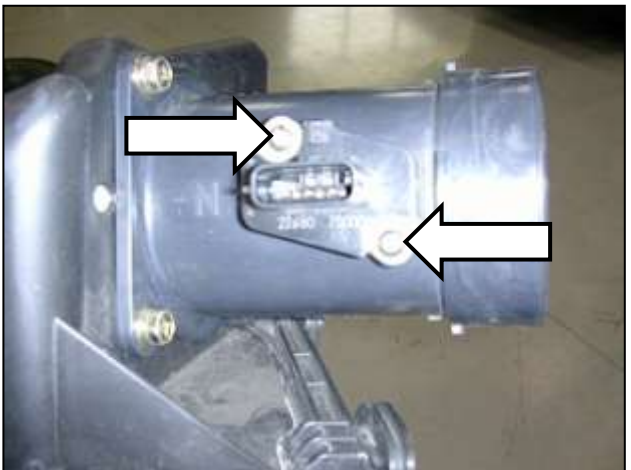
d. Loosen the two hose clamps on the ends of the inlet pipe. Remove the inlet pipe from the vehicle.



e. Free the clips that secure the mass air flow (MAF) sensor wiring harness. Unplug the MAF sensor.



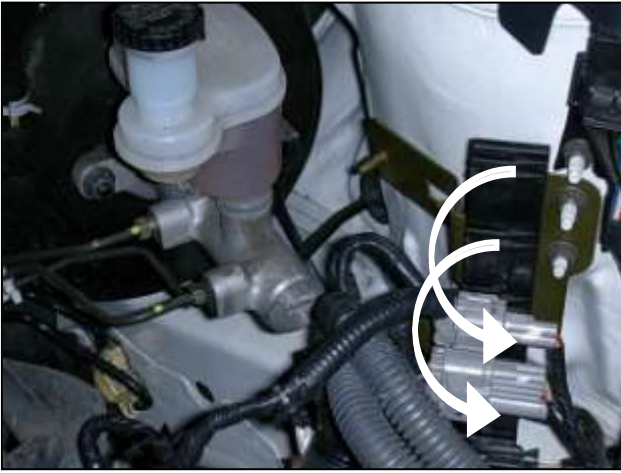
f. Removing the specified bolt and then remove the upper air box.



g. Loosen the screws that secure the MAF sensor. Carefully remove the MAF sensor.



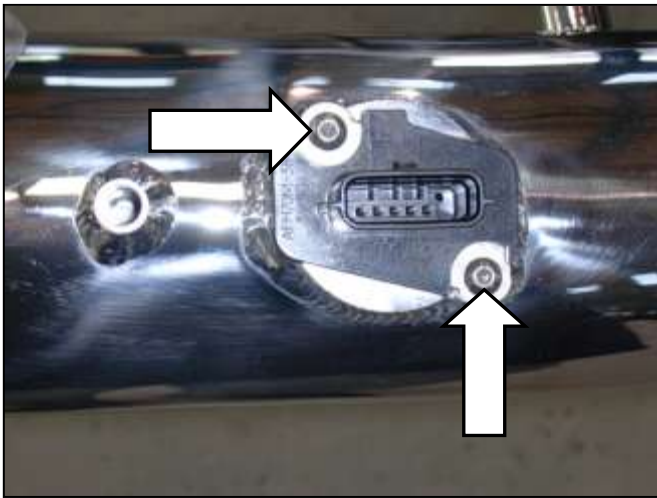
h. From inside the fender well, remove the two bolts that secure the lower air box. Then remove the lower air box from the vehicle.



i. Unclip the two wiring harness connectors and move them two places lower.

3. Installation of AEM[®] intake system.

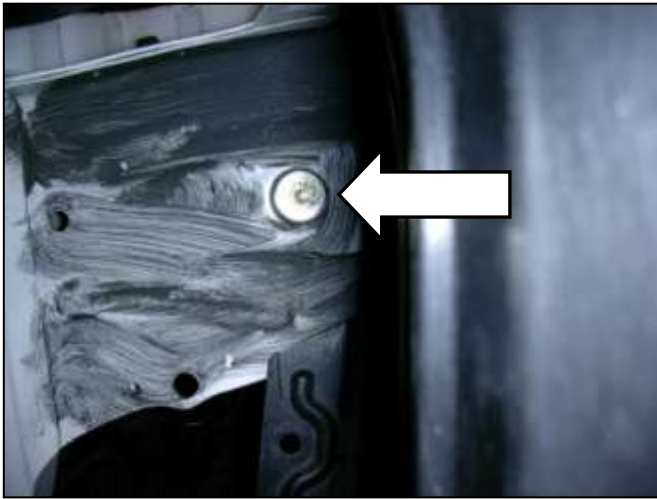
a. When installing the intake system, do not completely tighten the hose clamps or mounting hardware until instructed to do so.



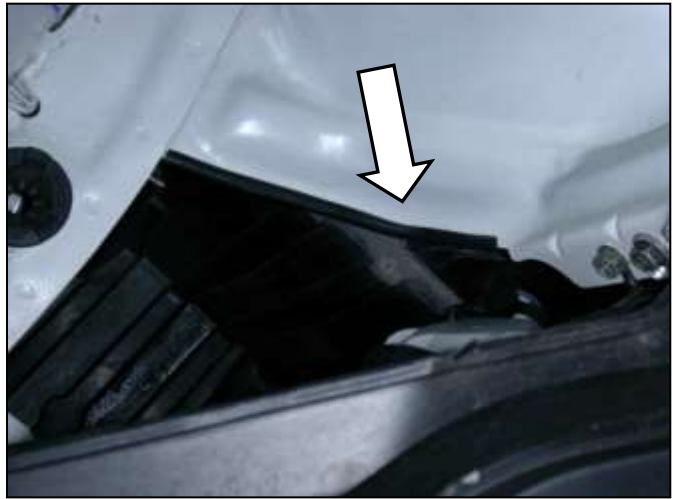
b. Utilizing the stock screws, install the MAF sensor into the AEM[®] intake pipe.



c. Slide the silicone coupler and supplied hose clamps onto the throttle body as shown.



d. Install the rubber mount in the upper hole previously used to secure the lower air box.



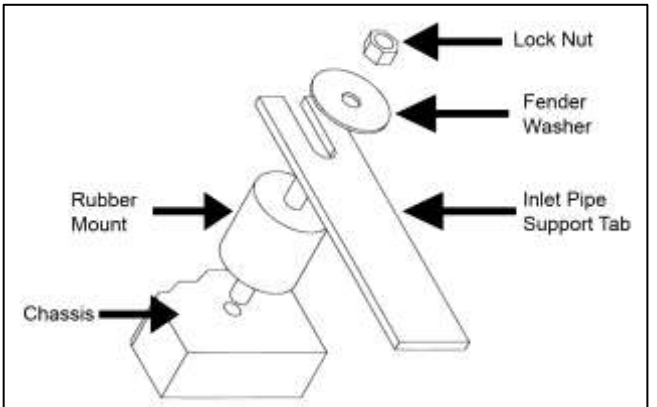
e. Install the rubber edge trim onto the metal lip behind the headlight.



f. Place the inlet pipe in the engine bay.



g. Place the large washer over the mounting tab. Lightly thread the lock nut over the washer.



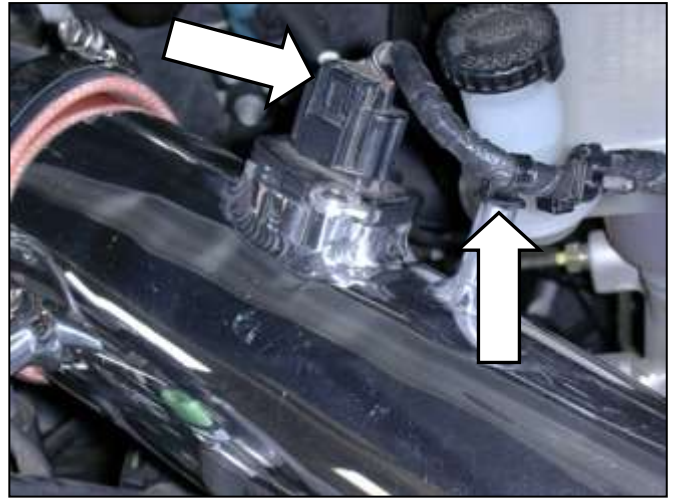
h. Proper installation of rubber mount assembly.



i. Place the air filter over the end of the inlet pipe. Tighten the air filter hose clamp.



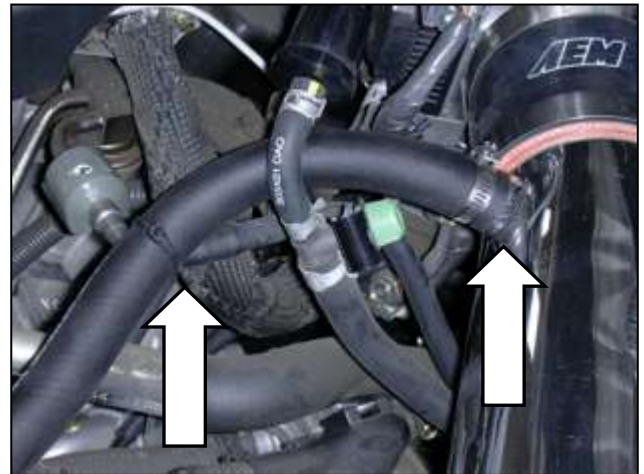
j. Attach the tree mount zip tie to the MAF sensor wiring harness. Trim the excess zip tie band.



k. Plug the tree mount zip tie into the nipple near the MAF sensor. Plug in the MAF sensor.



l. Secure one end of the supplied breather hose onto the valve cover with the supplied hose clamp.



m. Secure the other end of the breather hose to the inlet pipe with the supplied hose clamp. Zip tie the hose to the fuel line.



AEM® intake system installed

4. Reassemble Vehicle

- a. **Fender:** Install the fender liner and any hardware that was removed in steps in 1eii.
- b. **Wheel:** Install the driver side wheel using the factory torque specification (see owner's manual).
- c. Position the inlet pipes for the best fitment. Be sure that the pipes or any other components do not contact any part of the vehicle. Tighten the rubber mount, all bolts, and hose clamps.
- d. Check for proper hood clearance. Re-adjust pipes if necessary and re-tighten them.
- e. Inspect the engine bay for any loose tools and check that all fasteners that were moved or removed are properly tightened.
- f. Reconnect negative battery terminals and start engine. Let the vehicle idle for 3 minutes. Perform a final inspection before driving the vehicle.

5. CARB Sticker Placement

- a. The C.A.R.B. exemption sticker, (attached), must be visible under the hood so that an emissions inspector can see it when the vehicle is required to be tested for emissions. California requires testing every two years, other states may vary.

6. Service and Maintenance

- a. It is recommended that you service your AEM® Dryflow™ filter every 20,000 miles for optimum performance. Use AEM Dryflow cleaning kit part # 21-110.
- b. Use aluminum polish to clean your polished AEM intake tube.
- c. Use window cleaner to clean your powder coated AEM intake tube. **(NOTE: DO NOT USE aluminum polish on powder coated AEM intake tubes)**

For technical inquiries
e-mail us at
sales@aemintakes.com
or
call us at
800.992.3000

AEM Air Intake System Warranty Policy

AEM® warrants that its intake systems will last for the life of your vehicle. AEM will not honor this warranty due to mechanical damage (i.e. improper installation or fitment), damage from misuse, accidents or flying debris. AEM will not warrant its powder coating if the finish has been cleaned with a hydrocarbon-based solvent. The powder coating should only be cleaned with a mild soap and water solution. Proof of purchase of both the vehicle and AEM intake system is required for redemption of a warranty claim.

This warranty is limited to the repair or replacement of the AEM part. In no event shall this warranty exceed the original purchase price of the AEM part nor shall AEM be responsible for special, incidental or consequential damages or cost incurred due to the failure of this product. Warranty claims to AEM must be transportation prepaid and accompanied with dated proof of purchase. This warranty applies only to the original purchaser of product and is nontransferable. Improper use or installation, use for racing, accident, abuse, unauthorized repairs or alterations voids this warranty. AEM disclaims any liability for consequential damages due to breach of any written or implied warranty on all products manufactured by AEM. Warranty returns will only be accepted by AEM when accompanied by a valid Return Merchandise Authorization (RMA) number. Credit for defective products will be issued pending inspection. Product must be received by AEM within 30 days of the date RMA is issued.

If you have a warranty issue, please call (800) 992-3000 and our customer service department will assist you. A proof of purchase is required for all AEM warranty claims.